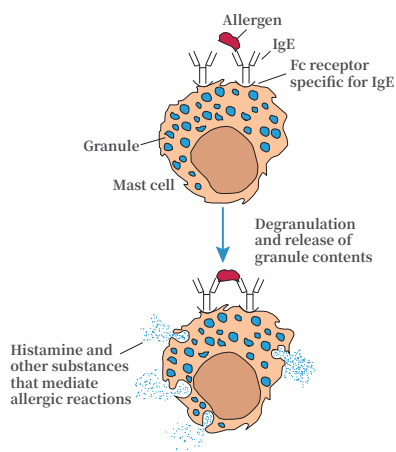


tIgE CLIA Microparticles



Background Introduction

IgE constitutes a fraction of the total antibody in serum (50-300ng/mL compared to 10mg/mL for IgG), and is mainly synthesized by B cells in the lymphoid tissue of lamina propria in the mucosa of respiratory and digestive tracts.



IgE plays an important role in immunological protection against parasitic infections and in allergy (type 1 hypersensitivity). After sensitization of a susceptible individual and the synthesis and binding of allergen-specific IgE to target cells, atopic individuals respond immunologically to common naturally occurring allergen by releasing mast cell-deviated mediators. Elevated serum IgE is the most powerful hint of allergic disease.

At present, about 20% of the global population suffers from allergic diseases, which has been called the sixth chronic disease in the world after cardiovascular diseases, respiratory diseases, diabetes, tumors and psychosocial diseases.

Allergy Panel List

| Cat No. | Product Name | Specification |
|---------|--------------------------|---------------|
| CMQ0602 | tlgE CLIA Microparticles | 100 T/K |

Clinical application

- The measured value of tlgE can be used to assist the diagnosis of allergic diseases.
- tlgE elevation can be seen in hay fever, allergic bronchitis and dermatitis.
- In periodic respiratory infections of infants and young children, the detection of tlgE has prognostic significance.



Autobio Diagnostics Co., Ltd.

Autobio Diagnostics Co., Ltd. | NO.87 Jingbei Yi Rd | National Eco & Tech Zone | Zhengzhou City | China 450016
T: +86-371-6798-5313 | F: +86-371-6798-5804 | E: info@autobio-diagnostics.com | W: www.autobio.com.cn